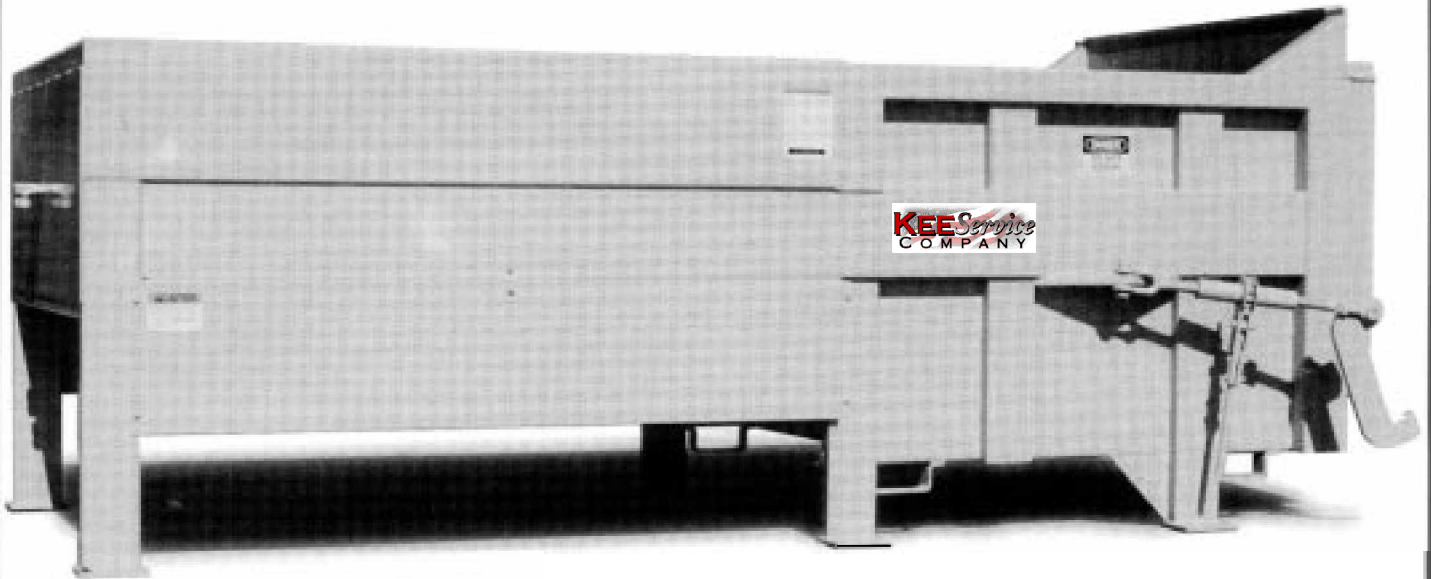




STATIONARY COMPACTOR

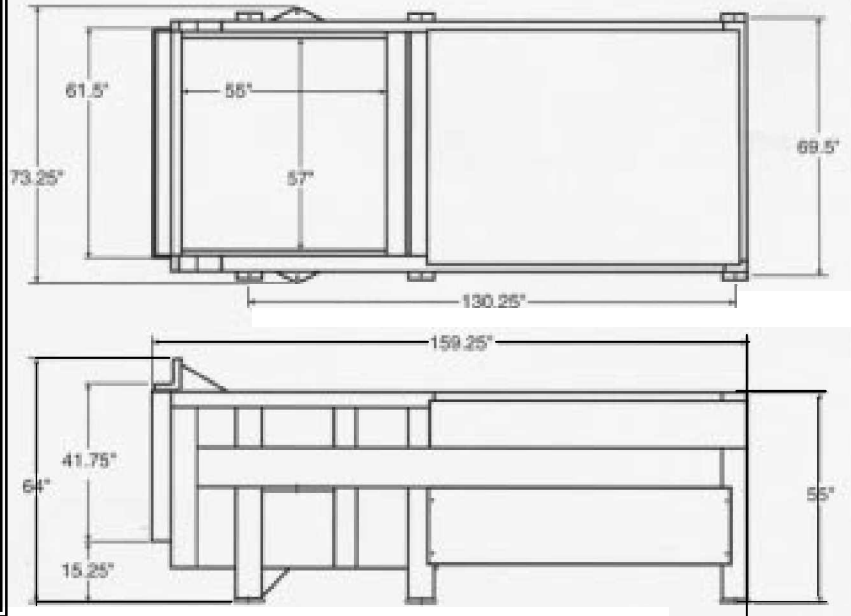
KS3S SERIES



KeeService Company, has established itself as a leader in innovation and dependability in the waste equipment industry. From engineering to production, KeeService Company is committed to providing top quality equipment and service.

The KS3S Series offers a large 55 1/2" x 57" charge chamber opening, capable of accepting bulky refuse. The KS3S's standard 14 1/2" ram penetration, with a standard duty ram force of 52,300#, is one of the largest in the industry, providing superior compaction rates.

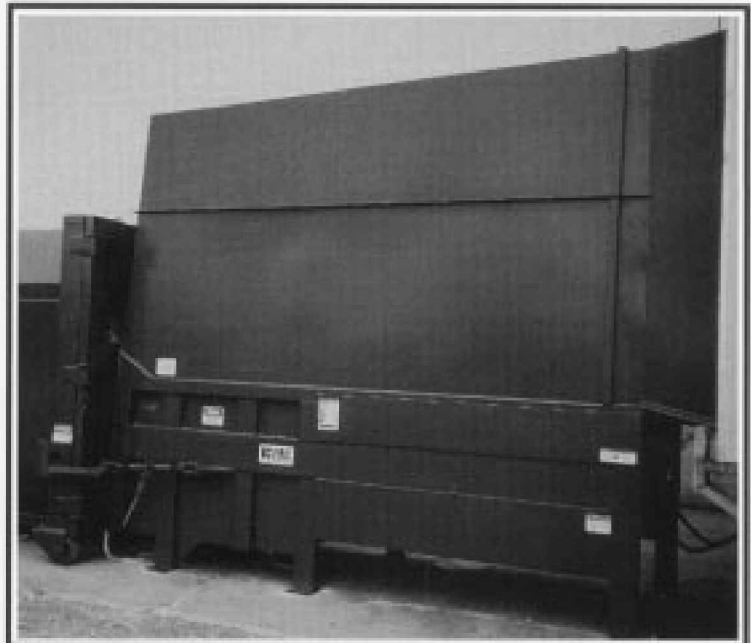
With the KS3S Series you can expect a clean, fast and trouble free operation of compaction and waste removal from KeeService Company.



KS3S STATIONARY COMPACTION SPECIFICATIONS

KS3S

WASTE C Rating	2.4 Cubic Yards
Clear-top Opening	55 1/2" x 57"
Ram Penetration	14 1/2"
Cylinder Size	1 - 6" x 72" Stroke
Floor	.50 Plate
Compactor Sides	.25 Plate
Ram Top	.25 Plate
Ram Face	.50 Plate
Power Pack HP	10 HP
Cycle Time	64 Sec
Norm. Force	52,300#
Max. Force	59,400#
Norm. PSI	1,850 PSI
Max. Force	2,100 PSI
Pump Size	12 GPM
Res. Size	20 Gallons
Weight/Complete	6,350 lb.
Power Pack	10 HP T.E.F.C./ 3 Phase 230/460 Volt 60 Hertz



Optional drive on enclosed hopper-dealer installed.

KEE Service COMPANY

Kee Service Company
 1515 American Way
 Cedar Hill, TX 75114
 Phone 972-293-0855 / Fax 972-292-9691

Continued product improvement is a KSC goal. Therefore, we reserve the right to make any changes in illustrations, specifications, equipment and prices.
 All KSC Compaction Units conform to applicable ANSI 2245.2 safety standards.



WASTE EQUIPMENT
TECHNOLOGY ASSOCIATION



ENVIRONMENTAL INDUSTRY
ASSOCIATION

