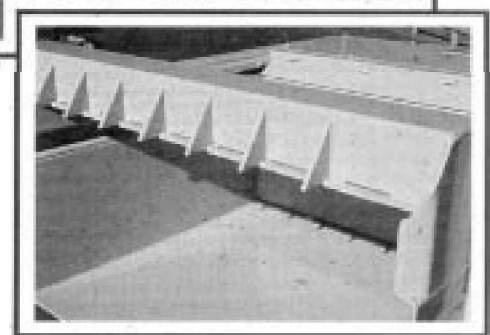
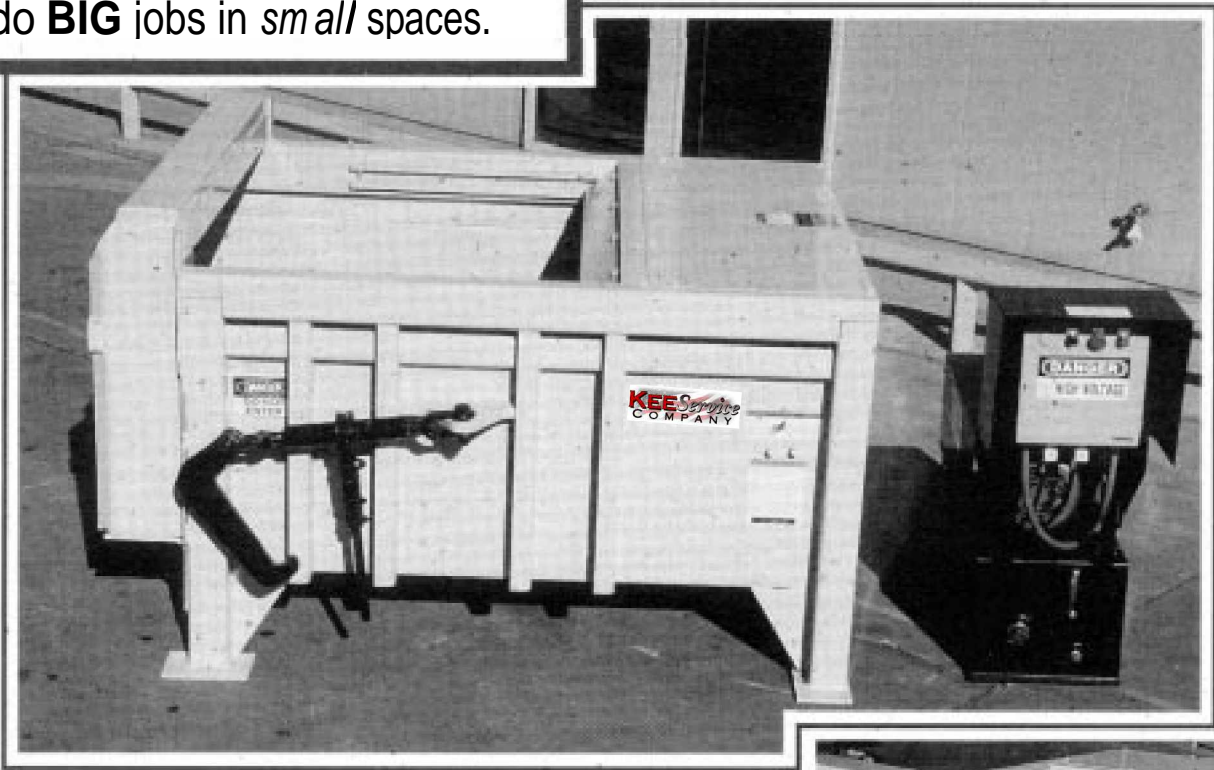


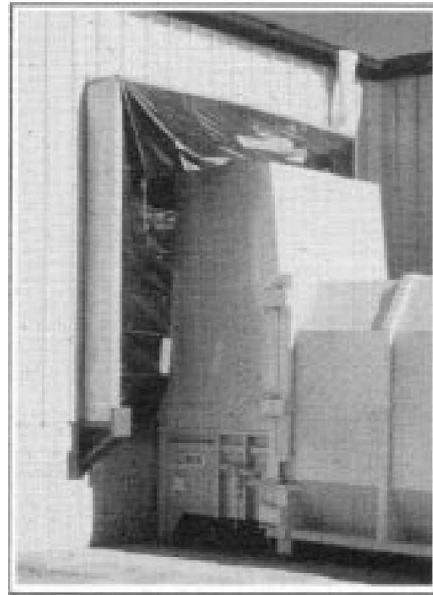
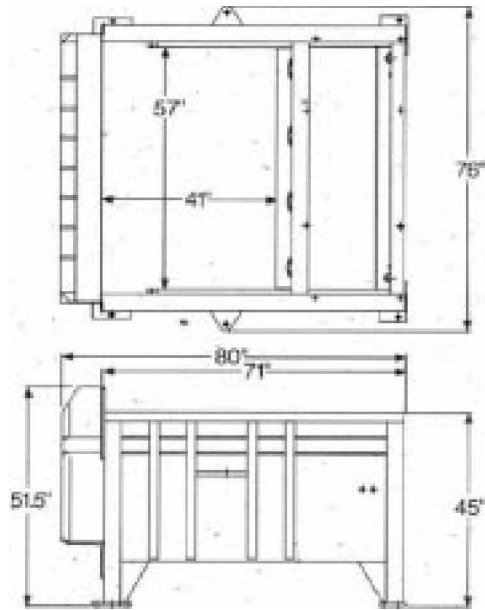
When you're in a tight spot, turn to the KSC Stationary "STUBBY", KS2 Stationary Compaction Units designed to do **BIG** jobs in *small* spaces.



KEEService Company has established itself as a leader in innovation and dependability in the waste equipment industry. From engineering to production, **KSC** is committed to providing top quality equipment and service.

The **KSC** KS2 Stationary Compactor is affectionately called "The Stubby." Its design is a **KSC** engineering masterpiece.

Other manufacturers have tried to match its space saving features, but nothing in the industry comes close. The overall length of 71 inches enables the KS2 to fit snugly against any structure. This design addresses valuable space requirements and dramatically reduces installation costs. Through-the-wall installation costs are also dramatically reduced thanks to the shorter feed chutes which require less installation materials. Special Orkot wear blocks on the four cast iron guide shoes of the packer blade provide longer wear life, reducing expensive floor and side wall repair costs. The "Stubby" is ideal for all your waste compaction applications, from **KSC** Equipment, **"THE TREND SETTERS..."**



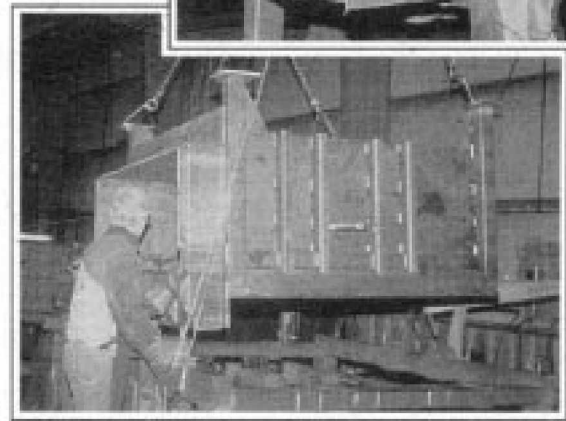
*"The Stubby"
fits snugly
against any
structure,
dramatically
reducing
installation
costs*

KS2 STATIONARY COMPACTION SPECIFICATIONS

	KS2
Cleartop Opening	41" x 57"
Ram Penetration	13"
Cylinder Size	2 - 4" x 37" Diagonal
Floor	.38 AR Plate
Compactor Sides	.25 Plate
Ram Top	.38 Plate
Ram Face	.25 Plate
Power Pack HP	10 HP
Cycle Time	34 Sec
Norm. Force	46,800#
Max. Force	51,150#
Norm, PSI	150 PSI
Max. PSI	2,350 PSI
Pump Size	12 GPM
Res. Size	20 Gallons
Weight/Complete	3,675 lb.
Power Pack	10 H.P. T.E.F.C./ 3 Phase 230/460 Volt 60 Hertz Norm, PSI



*Fixture for
quality from
beginning
to end*



KEE Service
COMPANY

Kee Service Company
1515 American Way
Cedar Hill, TX 75114
Phone 972-293-0855 / Fax 972-292-9691

Continued product improvement is a KSC goal. Therefore, we reserve the right to make any changes in illustrations, specifications, equipment and prices. All KSC Compaction Units conform to applicable ANSI 2245.2 safety standards.



WASTE EQUIPMENT
TECHNOLOGY ASSOCIATION



ENVIRONMENTAL HEALTH
& SAFETY

